

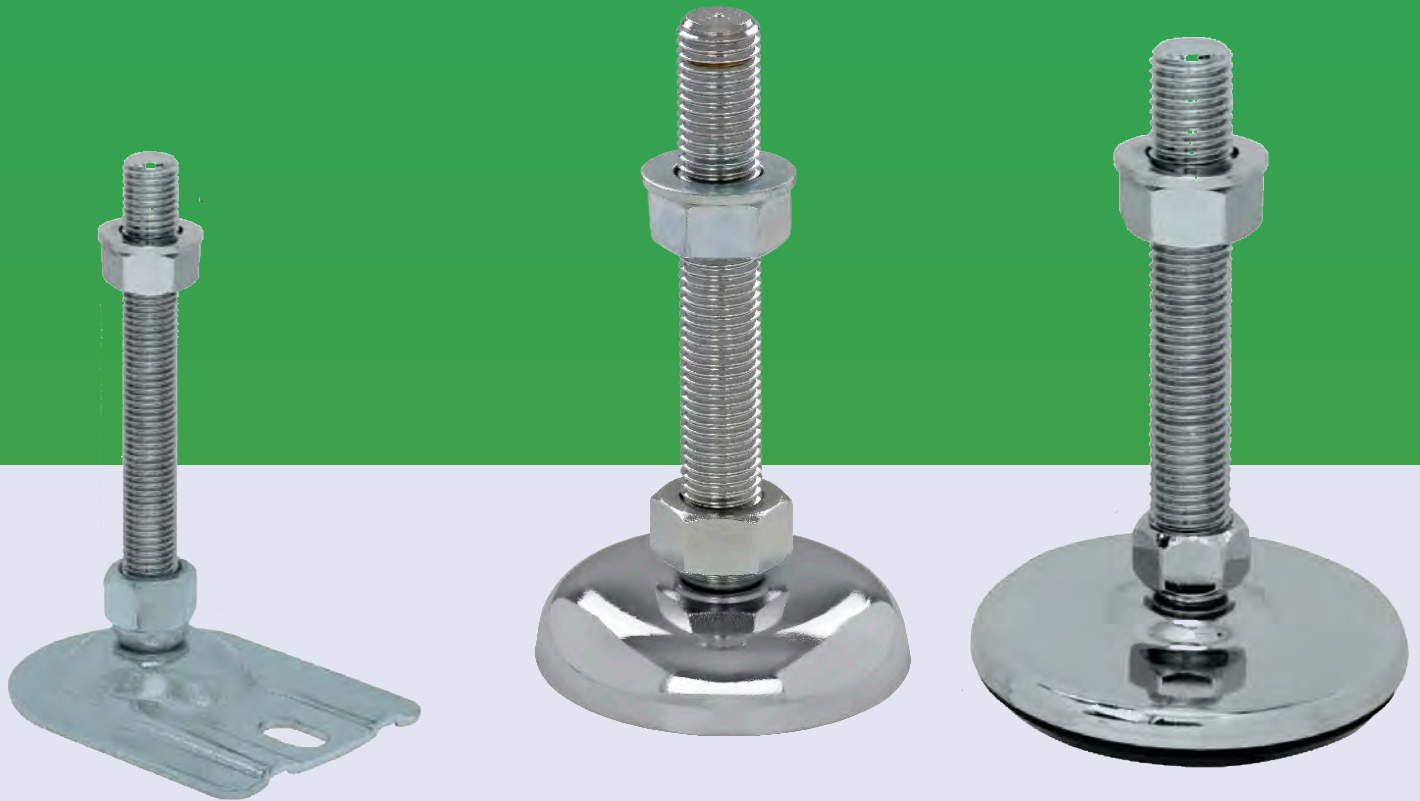


VIBRATION TECHNOLOGY, INC.

Machine Leveling Feet

Available In

- Metric: M8 to M30
- Inch: 1/2" to 1"



Bilz Vibration Technology, INC.

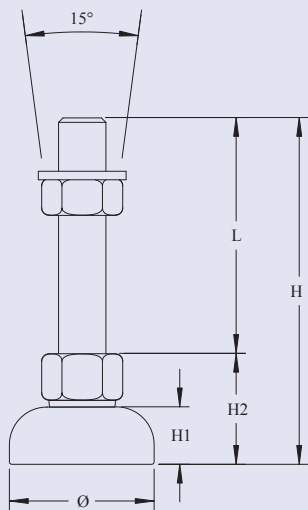
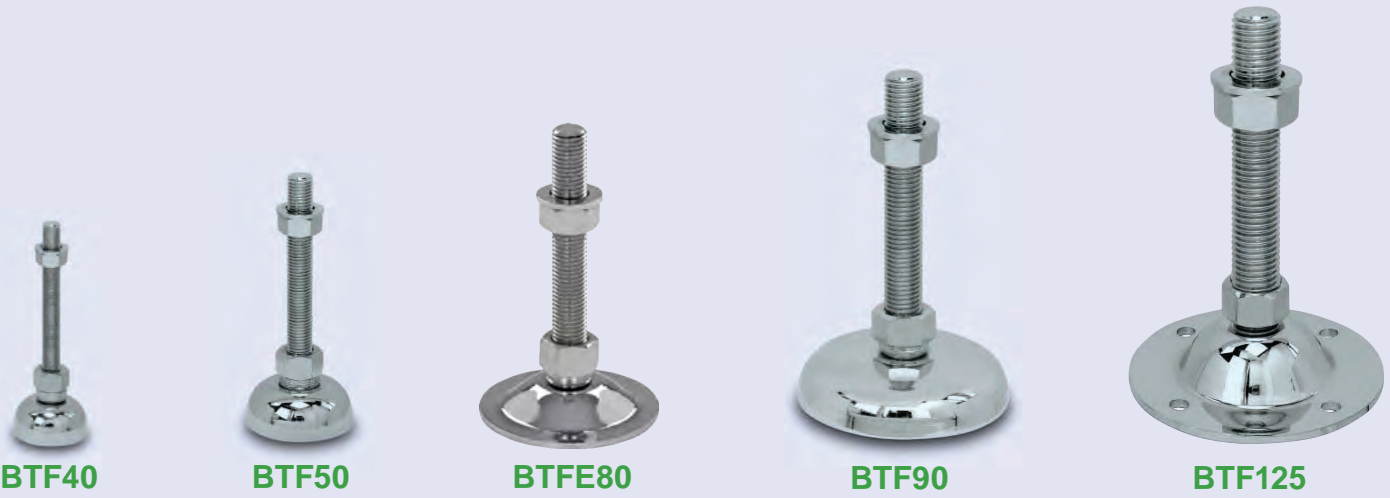
Cleveland, OH, USA

330.468.2459

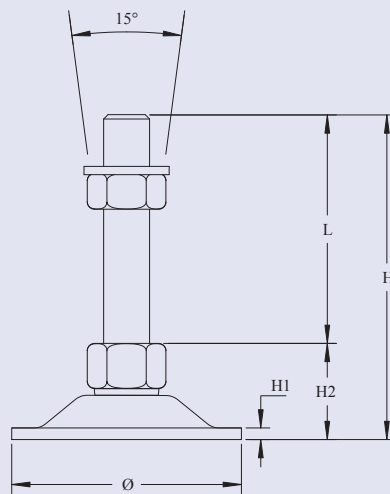
www.Bilz-USA.com

info@Bilz-USA.com

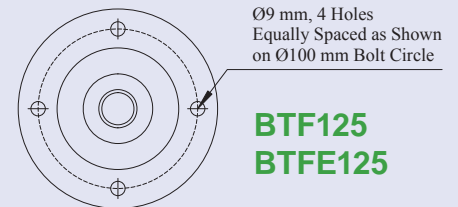
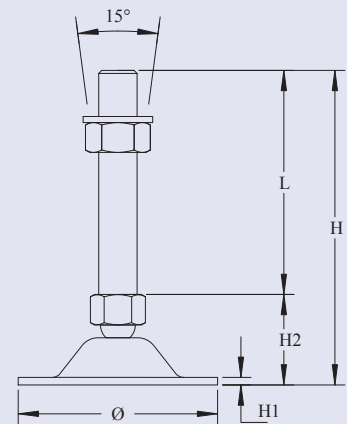
Qualified for all types of applications



BTF40
BTF50
BTF90



BTF80
BTFE80



BTF125
BTFE125

BTF	E	80	+	M10x100	Threaded Rod See chart on back cover																								
Material					<table border="1"> <thead> <tr> <th>Size</th> <th>Ø</th> <th>H1</th> <th>MaxLoad</th> </tr> </thead> <tbody> <tr> <td>40</td> <td>39mm</td> <td>20mm</td> <td>500kg</td> </tr> <tr> <td>50</td> <td>49mm</td> <td>20mm</td> <td>500kg</td> </tr> <tr> <td>80</td> <td>80mm</td> <td>4mm</td> <td>2000kg</td> </tr> <tr> <td>90</td> <td>90mm</td> <td>22mm</td> <td>3000kg</td> </tr> <tr> <td>125</td> <td>125mm</td> <td>5mm</td> <td>4000kg</td> </tr> </tbody> </table>	Size	Ø	H1	MaxLoad	40	39mm	20mm	500kg	50	49mm	20mm	500kg	80	80mm	4mm	2000kg	90	90mm	22mm	3000kg	125	125mm	5mm	4000kg
Size	Ø	H1	MaxLoad																										
40	39mm	20mm	500kg																										
50	49mm	20mm	500kg																										
80	80mm	4mm	2000kg																										
90	90mm	22mm	3000kg																										
125	125mm	5mm	4000kg																										
OMIT	Steel - Chrome Plated																												
E	Stainless Steel 1.4301 - AISI 304																												
Series																													
BTF	Stamped Steel Round Foot, Without Rubber																												

For dimensions not listed, request data sheet.

Range of Applications:

- Air / Oil / Water Tanks
- Material Handling
- Food Industry
- Pharmaceutical Industry
- Chemical Industry
- Packaging Industry



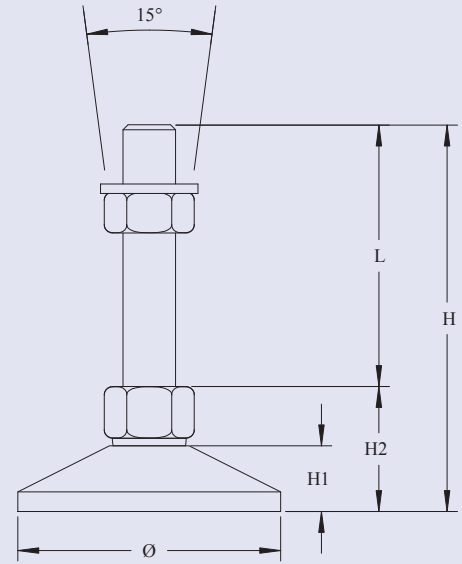
BVME80



BVME100



BVME150



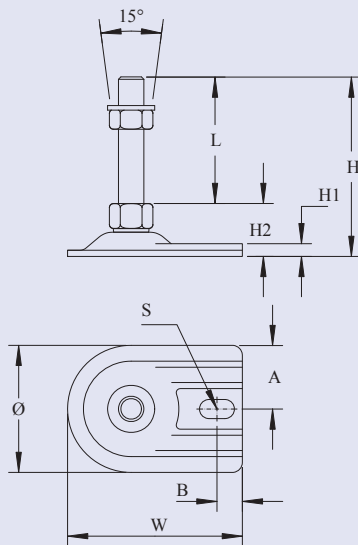
BVM	E	80	+	M10x100	Threaded Rod See chart on back cover																				
Material					<table border="1"> <thead> <tr> <th colspan="4">Size</th> </tr> <tr> <th></th> <th>Ø</th> <th>H1</th> <th>MaxLoad</th> </tr> </thead> <tbody> <tr> <td>80</td> <td>85mm</td> <td>20mm</td> <td>850kg</td> </tr> <tr> <td>100</td> <td>100mm</td> <td>20mm</td> <td>2000kg</td> </tr> <tr> <td>150</td> <td>150mm</td> <td>20mm</td> <td>6000kg</td> </tr> </tbody> </table> <p><i>For dimensions not listed, request data sheet.</i></p>	Size					Ø	H1	MaxLoad	80	85mm	20mm	850kg	100	100mm	20mm	2000kg	150	150mm	20mm	6000kg
Size																									
	Ø	H1	MaxLoad																						
80	85mm	20mm	850kg																						
100	100mm	20mm	2000kg																						
150	150mm	20mm	6000kg																						
Series																									
BVM	Machined Steel Round Foot, Without Rubber																								

Range of Applications:

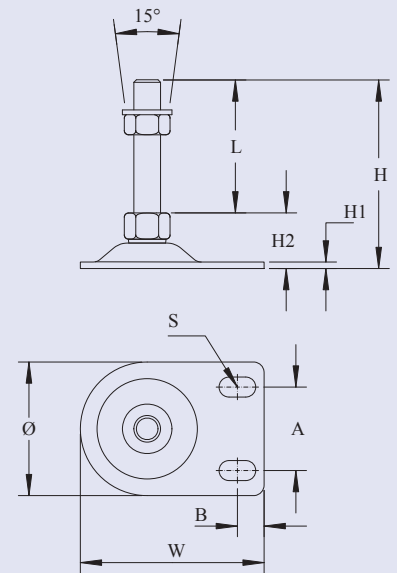
- Air / Oil / Water Tanks Construction
- Material Handling
- Food Industry
- Transportation Lock
- Conveyors
- Special Purpose Machines
- Process & Packaging Machines
- Pharmaceutical Industry
- Chemical Industry
- Packaging Industry



BVSF80V
BVSFE80V
BVSF120V
BVSFE120V



BVSF80
BVSFE80



	A	B	W	S
80	50mm	16mm	110mm	12mm x 22mm
80V	40mm	16mm	110mm	12mm x 22mm
120V	60mm	25mm	165mm	21mm x 31mm

BVSF **E** **80** + **M10x100**

Threaded Rod

See chart on back cover

Material

OMIT	Steel - Chrome Plated
E	Stainless Steel 1.4301 - AISI 304

Series

BVSF	Stamped Steel Foot with Bolt Down Flange, Without Rubber
-------------	--

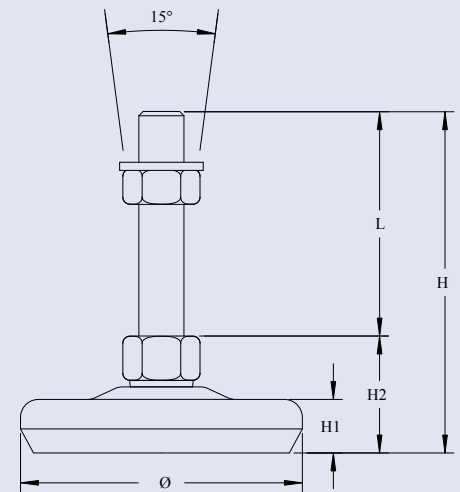
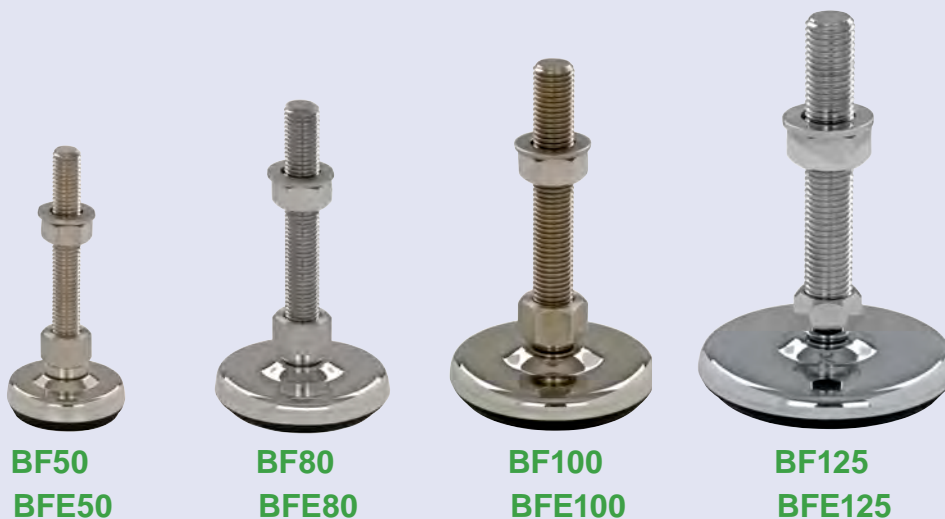
Size

	Ø	H1	MaxLoad
80	80mm	4mm	2000kg
80V	80mm	8mm	2000kg
120V	120mm	10mm	4000kg

For dimensions not listed, request data sheet.

Range of Applications:

- Food Industry
- Pharmaceutical Industry
- Chemical Industry
- Special Purpose Machines
- Automation Equipment
- Conveyors
- Process & Packaging Machines
- Weighing Machines



BF	E	50	+	M10x100	Threaded Rod See chart on back cover
-----------	----------	-----------	----------	----------------	--

Material	
OMIT	Steel - Chrome Plated
E	Stainless Steel 1.4301 - AISI 304

Series	
BF	Stamped Steel Round Foot with Vulcanized Rubber Pad / NBR 70° Shore A (Black) - Standard NOTE: 50° Shore A and 85° Shore A - Special Order

Size			
	Ø	H1	MaxLoad
40	40mm	14mm	250kg
50	50mm	14mm	300kg
80	80mm	17mm	850kg
100	100mm	19mm	2000kg
125	125mm	19mm	3000kg

For dimensions not listed, request data sheet.

Range of Applications:

- Plastic Injection Molding Machines
- Hydraulic Equipment
- Bottling Machines
- Packaging Machines
- Textile & Woodworking Machinery



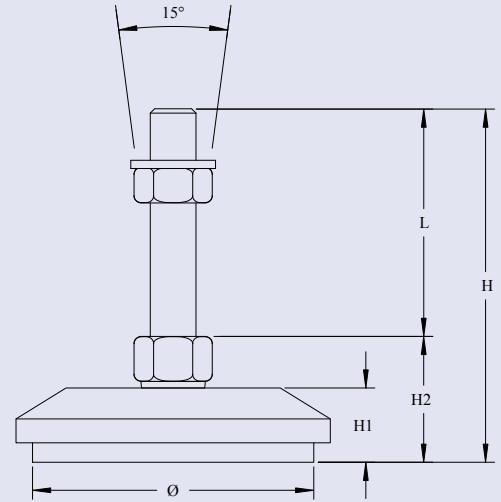
BCMP80



BCMP100



BCMP130



BCMP	80	+	M10x100	Threaded Rod See chart on back cover
-------------	-----------	----------	----------------	--

Series	Description
BCMP	Cast Iron Chrome Plated Round Foot with Vulcanized Rubber Pad / NBR 70° Shore A (Black) - Standard NOTE: 50° Shore A and 85° Shore A - Special Order

Size	Ø	H1	MaxLoad
80	85mm	26mm	850kg
100	110mm	26mm	2000kg
130	140mm	29mm	3000kg

For dimensions not listed, request data sheet.

Range of Applications:

- Machining Centers
- Transfer Systems
- Industrial Robots
- Special Machines
- Plant Construction

Characteristics:

- Large Adjustable Range
- Precise Leveling with Use of Fine Thread
- Load Capacity From 500kg to 4000kg
- With or Without Vibration Isolation
- For Freestanding or Bolt on Mounting Equipment
- Cost Effective Installation Method



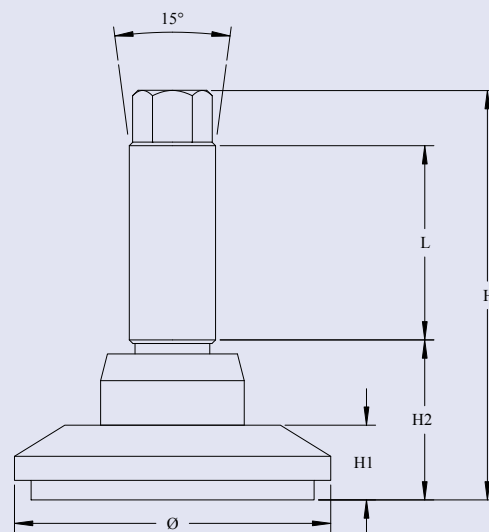
BCMHD80



BCMHD100



BCMHD130



BCMHD **80C - S6** + **M30 x 1.5 x 70**

Size / Length

	L	Bolt Through Hole Diameter
M30 x 1.5 x 70	70mm	17mm
M30 x 1.5 x 110	110mm	NONE
M30 x 1.5 x 140	140mm	17mm

NOTE: Other lengths available - special order.

MATERIAL: Steel - Zinc Plated

Size / Type

	Ø	H1	MaxLoad	Rubber Pad
80C - S6	85mm	20mm	1500kg	NONE
100C - S6	110mm	20mm	2500kg	NONE
130C - S6	140mm	23mm	4000kg	NONE
80C - S12	85mm	26mm	500kg	NBR 85° Shore A
100C - S12	110mm	26mm	1000kg	NBR 85° Shore A
130C - S12	140mm	29mm	1500kg	NBR 85° Shore A

For dimensions not listed, request data sheet.

Series

BCMHD	Cast Iron Chrome Plated Round Foot, Bolt Through Design
--------------	---

Metric Threaded Rod

L thread length	M8/10	M12	M16	M20	M24	M30
50mm	X	X	X			
80mm	X	X	X	X		
100mm	X	X	X	X	X	X
120mm	X	X	X	X	X	X
150mm	X	X	X	X	X	X
180mm	X	X	X	X	X	X
200mm	X	X	X	X	X	X
250mm			X	X	X	X
300mm			X	X	X	X
Wrench Flats	17mm	19mm	24mm	30mm	30mm	30mm

Available Materials: Stainless Steel - AISI 304 - 1.4301 / Steel - Zinc Plated
Any size threaded rod can be combined with any of the different types of Leveling Feet.

Inch Threaded Rod

L thread length	1/2" - 13UNC	5/8" - 11 UNC	3/4" - 10 UNC	1" - 8 UNC
2"	X	X		
4"	X	X	X	X
5"	X	X	X	X
6"	X	X	X	X
8"	X	X	X	X
10"		X	X	X
12"		X	X	X
Wrench Flats	3/4"	15/16"	1 1/8"	1 1/2"

Available Materials: Stainless Steel - AISI 304 - 1.4301 / Steel - Zinc Plated
Any size threaded rod can be combined with any of the different types of Leveling Feet.

Bilz Vibration Technology, INC.

PO Box 241305 Cleveland, OH 44124

330.468.2459

www.Bilz-USA.com

info@Bilz-USA.com